

## Installation Instructions:

Ensure within aperture is clean and free of debris, loose cement, and remove all dust from surfaces requiring installation.

### Detail A- framed & lined, single FB750 Intubatt up to 120 Minutes integrity & 60 insulation

1. Cut FB750 Intubatt to tightly fit in to aperture. Coat FB750 Intubatt edges and fit in to opening at required position.

Note: adoption of additional layer of FB750 Intubatt as per detail "d" will provide up to 120 minutes insulation and integrity

### Detail B- single FB750 Intubatt with FB750 Intubatt lined opening rated as detail a

1. Cut FB750 Intubatt to form lining to framed aperture, ensuring FB750 Intubatt finishes flush with face of plasterboard.
2. Bond FB750 Intubatt lining to framed opening with FS702 Intumastic.
3. Fit FB750 Intubatt in to opening ensuring good bonding to framing and plasterboard edge.
4. Cut FB750 Intubatt to tightly fit in to FB750 Intubatt lining.

Note: adoption of additional layer of FB750 Intubatt as per detail "d" will provide up to 120 minutes insulation and integrity

### Detail C- unframed, unlined, double pattern FB750 Intubatt rated up to 120 minutes integrity & insulation

1. Cut FB750 Intubatt to required size and shape, ensuring the FB750 Intubatt will overlap the plasterboard a minimum of 75mm around the opening.
2. Apply FS702 Intumastic to plasterboard where the FB750 Intubatt is to be fitted, to bond FB750 Intubatt to plasterboard and FB750 Intubatt to FB750 Intubatt
3. Firmly press FB750 Intubatt to plasterboard to ensure bond.
4. Fix the FB750 Intubatt to the plasterboard using minimum 75mm long steel screws and 25mm diameter steel washers. Fixings should not exceed 50mm from any edge and not exceed 200mm centres.

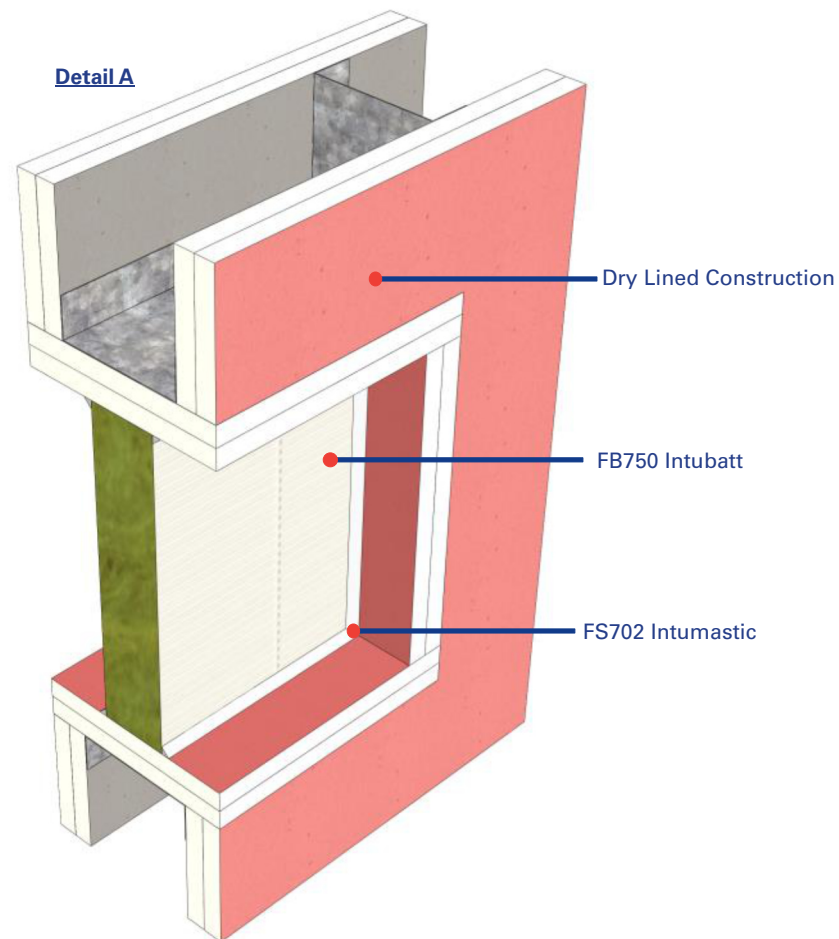
### Detail D - Framed opening, two layers of FB750 Intubatt suitable for up to 120 minutes.

1. Cut FB750 Intubatt to tightly fit in to framed aperture.
2. Coat FB750 Intubatt edges and fit in to opening, ensuring FB750 Intubatt finishes flush with plasterboard face.
3. Repeat to the opposite side of the wall if required.

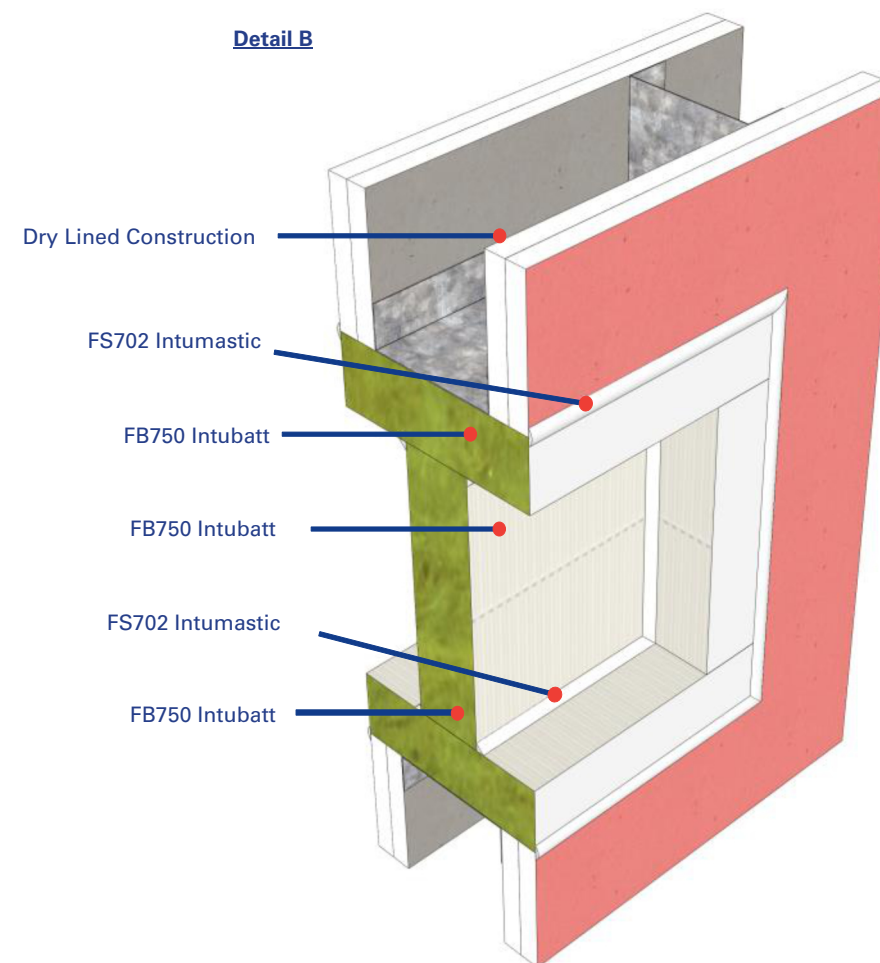
### General

1. Coat all joints, exposed edges of FB750 Intubatt and damages to coating with FS702 Intumastic brush grade.
2. Apply FS702 Intumastic bead to all FB750 Intubatt interfaces/ joints.

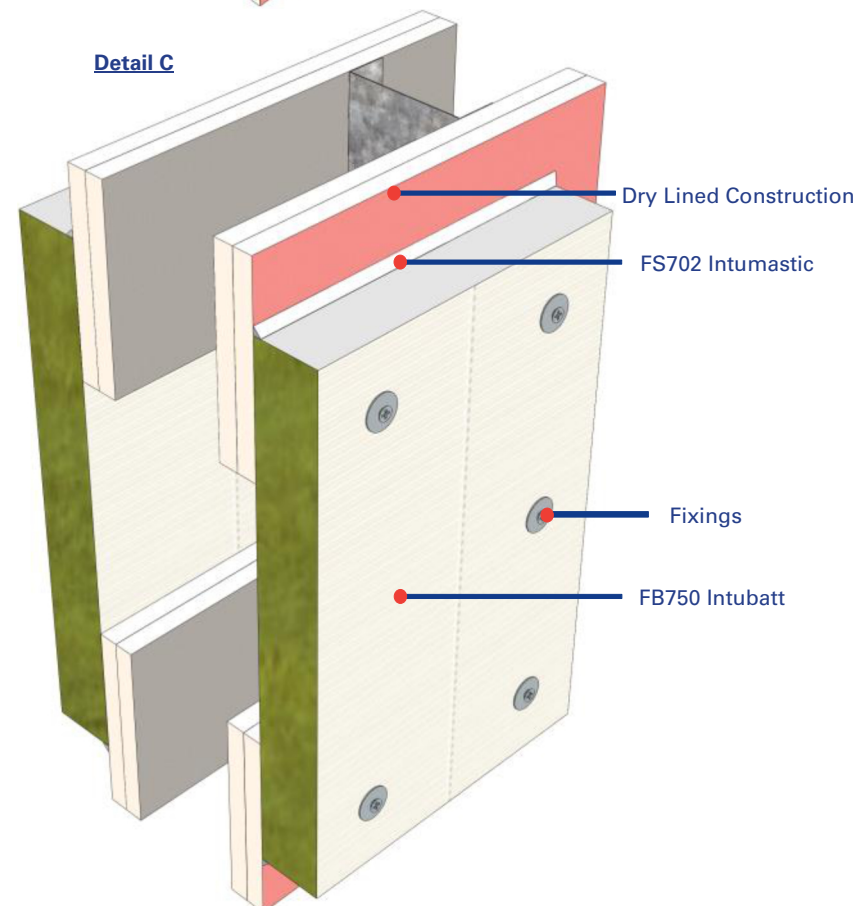
Detail A



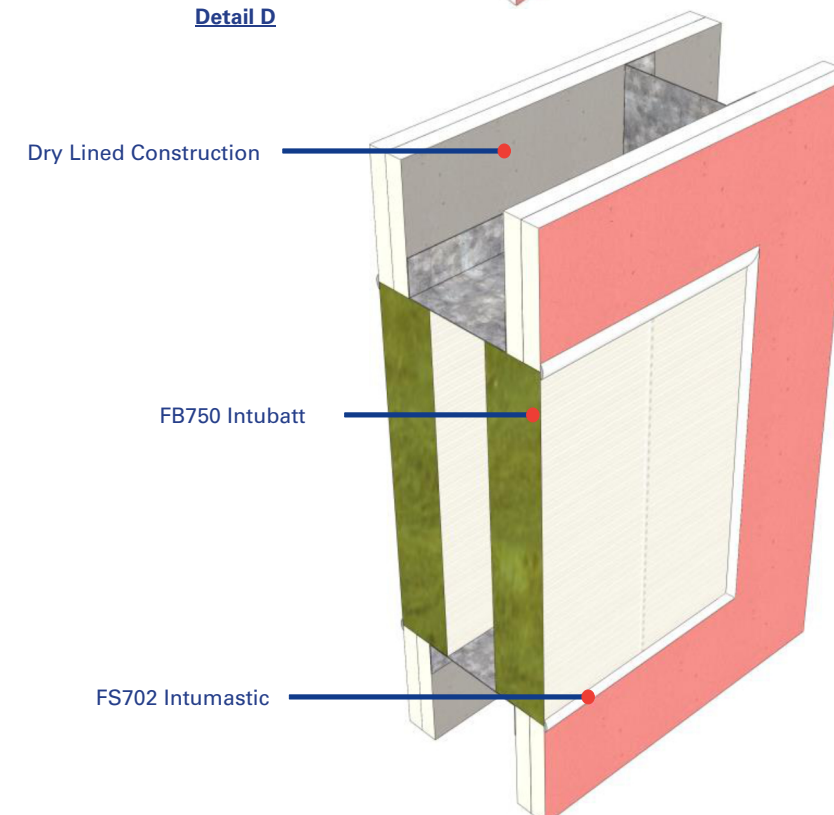
Detail B



Detail C



Detail D



## Test Information:

Test: BSEN1366 / BS476

### Products:

FB750 Intubatt & FS702 Intumastic

### Scenario:

Penetration through dry-lined wall construction

### Penetrations:

Various penetrations tested, see drawings PS006 to TBC for specific installation guidelines

### Void Size:

1190mm x unlimited length. Above FB750 Intubatt length 1200 framework required.

### Fire Resistance:

Tested up to 120 minutes. Please see specific detail for fire rating. Fire ratings contained herein are based upon plain seals only.

### Acoustic:

Test: BRE 224463  
FB750 Intubatt 1, Two Layers  
Void 1.0m2 59dB

Test: BM Trada Z/12017  
FB750 Intubatt 2 One Layer  
Void 0.6m2 36dB

FB750 Intubatt 2 Two Layer  
Void 0.3m2 57dB  
Void 0.6m2 50dB

Nullifire details will only perform to the substrates performance capabilities. This applies to fire and acoustic. It is the responsibility of the purchaser to ensure suitability. If in doubt call technical.

## Drawing Title:

Openings within Dry Lined Wall Construction.

## Drawing Reference No:

PS-002

A3